

**Retrieving, Comparing & Managing FUEL Economy Data Available In Each Bus.**

**This Carolina Thomas Bus Buzz is providing information that will help you:**

- **Compare fuel economy between drivers.**
- **Compare fuel economy between Thomas buses and other brands.**
- **Provide information to manage the high expense of fuel.**



**NOTE:**

**Do you recall when we shared information with you about tapping into the buses' computer to change road speeds and we promised more helpful tips were coming?**

**This “buzz” shares another tip that can help you watch, compare and manage fuel costs. Information is key. The information provided in the bus can help you develop a plan to reduce fuel expenditures.**



## Why Does This Even Matter?

DPI Message #629 sharing fuel cost news states...

- Average fuel/gallon price is \$3.30/gallon.
- State budgeted \$2.51/gallon. (Shortfall of 79 cents/gallon.)
- Recent increase allowing for \$2.79/gallon. (Still a shortfall of 51 cents for every gallon of fuel consumed.)

**Fuel usage reduction is critical.**





A Thomas Saf-T-Liner C2 stores fuel usage from the time of engine installation.

- How much idle time does each bus have?
  - What is average speed of each route?
  - How do driver's effect the fuel economy?
- Can you use this information to spur contests and reward economical operation of the bus?
- Can your reduce fuel costs to help your budget?

Regen information: Some buses regen more than others, due to route, brand of engine, idling, etc.

Name	ECM Value	Units
Trip Since Last Reset		
Aftertreatment		
Maximum Diesel Particulate Filter Differential Pressure	2.6	InHg
Maximum Diesel Particulate Filter Soot Load	0.0	
Number of Complete Regenerations	1	
Number of Incomplete Regenerations	2	
Trip Information Aftertreatment Diesel Exhaust Fluid Used		gal
Fuel Used		
Average Fuel Economy	9.8	mpg
Average Fuel Rate	4.5	gph
Fuel Consumed for Aftertreatment Injection	1.1	gal
Fuel Used	1470	gal
Idle Fuel Used	140	gal
Loaded PTO Stationary Fuel Used		gal
PTO Device 1 Trip Fuel Used	0	gal
PTO Device 2 Trip Fuel Used	0	gal
PTO Device 3 Trip Fuel Used	0	gal
PTO Device 4 Trip Fuel Used	2	gal
PTO Device 5 Trip Fuel Used	0	gal
PTO Device 6 Trip Fuel Used	0	gal

**Fuel Economy**

**Is the bus being Idled excessively?**

**How does this data compare with LEA policies on idling?**



**The Thomas Saf-T-Liner C2 has a wealth of information stored on board that you can access to help you manage your fleet. These previous examples are just some items that you can use to hone in on reducing costs, reducing your schools carbon footprint, improving fuel economy, and making purchasing decisions.**

**Have you ever wondered how long the bus ran with the check engine light on and does this compare with information received?**

**Why do some buses need regenerating more than others?**

**Etc.**

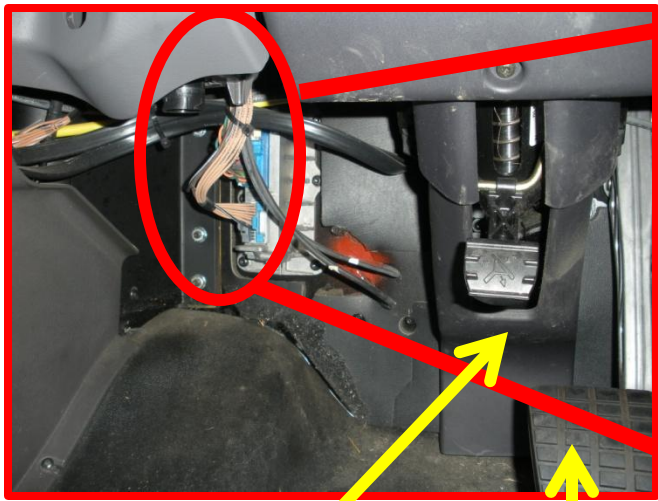




# Retrieving Fuel Economy Information



Step 1: Connect the laptop to the bus by using the 9-pin diagnostic receptacle inside every C2 located above the driver's left foot position.



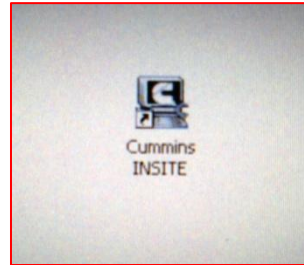
Driver's Brake Pedal  
Steering Tilt Pedal



# Retrieving Fuel Economy Information

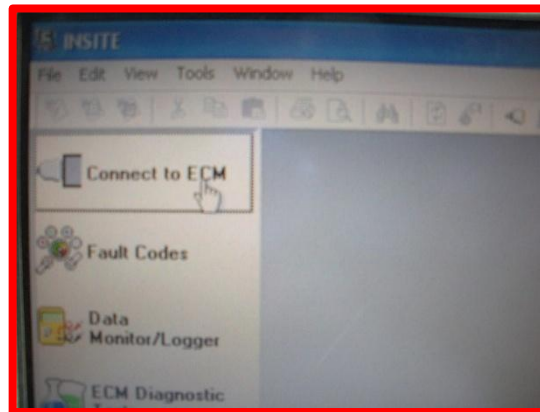


Step 2: Click on your desktops Cummins INSITE Icon.

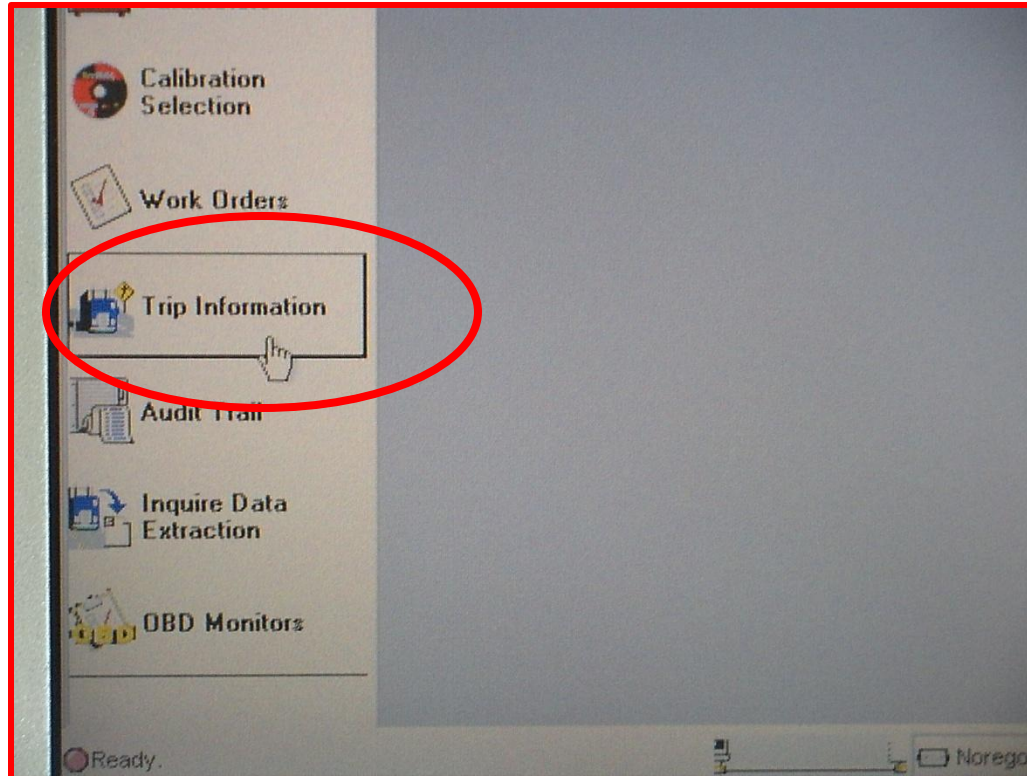


Step 3: Turn key in bus to on position. Bus does NOT need to be running.

Step 4: Click on “Connect to ECM” menu on left and then click “Connect” in pop up window.



Step 5: Click on "Trip Information".





Example: Brand new bus data shown that this bus has only used 11 gallons of fuel while being manufactured, pre-delivered, inspected and cleaned.



Name	MPG
<b>Fuel Used</b>	
Coast Fuel Used	0.0
Cruise Control Fuel Used	0.0
Drive Fuel Used	5.1
Fuel Consumed for Aftertreatment Injection	0.0
Fuel Used	11.0
Gear Down Fuel Used	0.6
Idle Fuel Used	2.4
Loaded PTO Drive Fuel Used	0.0
Loaded PTO Stationary Fuel Used	0.0
Maximum Accelerator Vehicle Speed Fuel Used	0.0
PTO Device 1 Total Fuel Used	0
PTO Device 2 Total Fuel Used	0
PTO Device 3 Total Fuel Used	0
PTO Device 4 Total Fuel Used	2
PTO Device 5 Total Fuel Used	0
PTO Device 6 Total Fuel Used	0



Imagine now that the information available is tracked for every bus?

The MPG for each route is shared with each operator and they are encouraged to try and improve it? To operate more efficiently, reduce idling, etc.

Contests developed for MPG improvement on a given route or activity trip?

Positive press received by sharing information with local press for fuel consumption reduction efforts and carbon footprint reductions.

Information used to support decisions on the most economical buses for fuel economy. The Thomas C2 is the most fuel economical bus available in its class.

My LEA's technicians become comfortable with the data available on board the Saf-T-Liner C2 and they tap into the wealth of other information available on board the buses' computer. Your ideas here...





If interested in more information on the most economical school bus & engine combination available today please go to our website.

Carolinathomas.com

Click Carolina Thomas Bus Buzz.

Scroll down and read about fuel economy tests.

[Or click here.](#)

