

**Service Tip for Counties that have
Cummins Insite Software.**

Changing Road Speed Parameters.

**Maybe you have to bring the bus in
for a repair. Maybe you got home
with a new bus and cannot
remember how to adjust the speed
as required by the state.**

**Bonus: In the very near future we
are going to show you how to
access the fuel economy. This bus
buzz will be good practice.**





NOTE:
**This Carolina Thomas
Bus Buzz assumes you
have a service
department laptop with
the
Cummins Insite Software.**

**If you do not have Insite
you can learn some of
what it can do or call us
and we can get you what
you need.**



Step 1: Connect the laptop to the bus by using the 9-pin diagnostic receptacle inside every C2 located above the driver's left foot position.

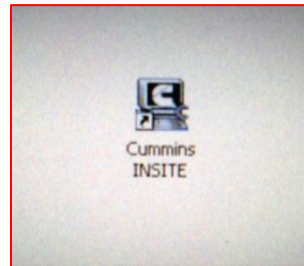


Steering Tilt Pedal

Driver's Brake Pedal

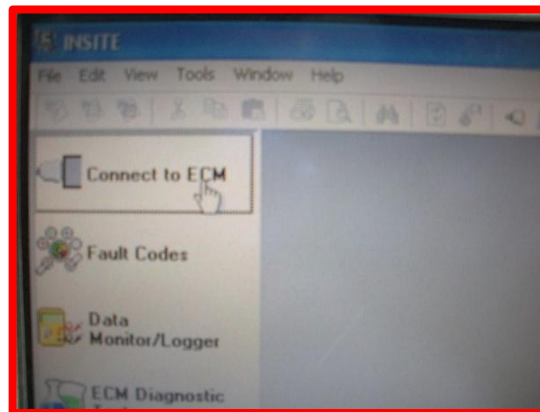


Step 2: Click on your desktops Cummins INSITE Icon.

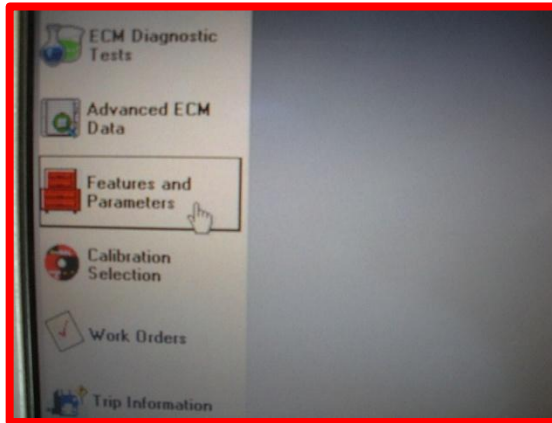


Step 3: Turn key in bus to on position. Bus does NOT need to be running.

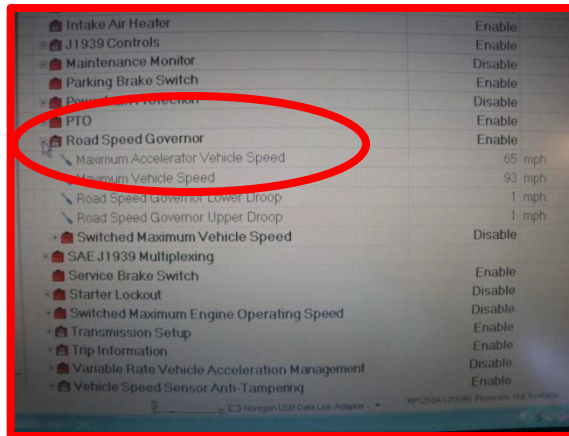
Step 4: Click on “Connect to ECM” menu on left and then click “Connect” in pop up window.



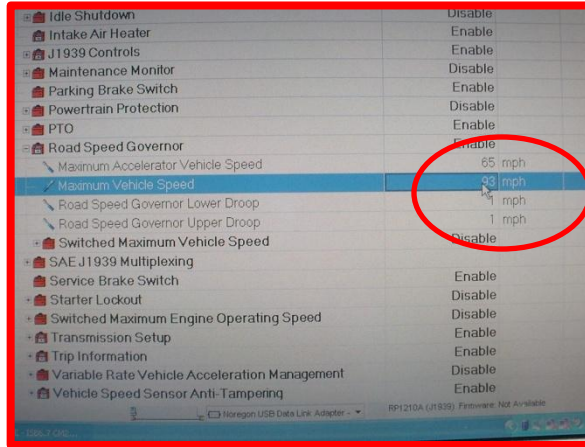
Step 5: Click on “Features and Parameters”.



Step 6: Scroll down menu to Road Speed Governor and click on icon beside to expand its options. The menu is in alphabetical order for ease of use.



Step 7: Double click on MPH number on MAX VEHICLE SPEED.

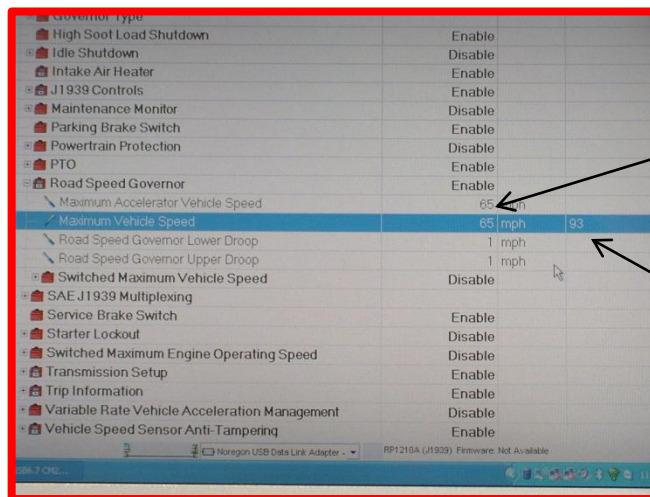


Step 8: Enter the new MPH speed required and then click on the number. **Note:** North Carolina has specific laws for buses in operation. Please adhere to these laws for any bus in-service.

Step 9: Double click on MPH number on MAX ACCELERATOR SPEED and change to same value as MAXIMUM VEHICLE SPEED.



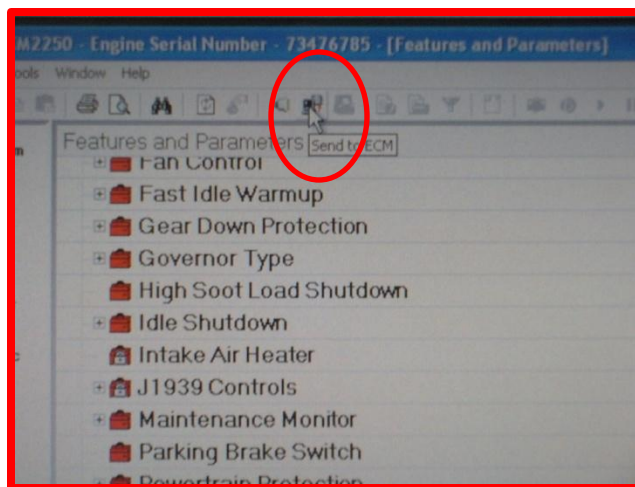
NOTE: New speed is displayed and old speed is displayed to the right.



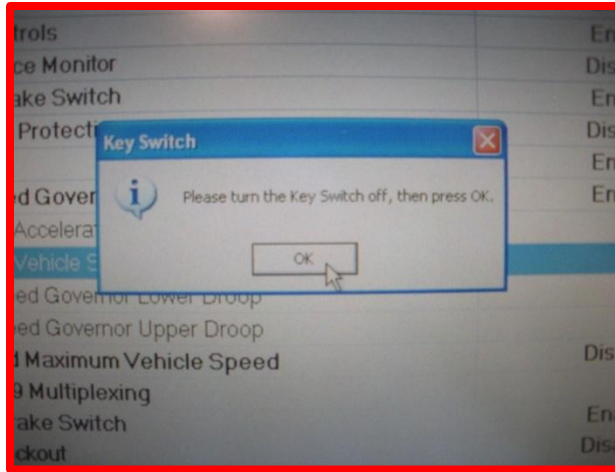
New speed

Old speed

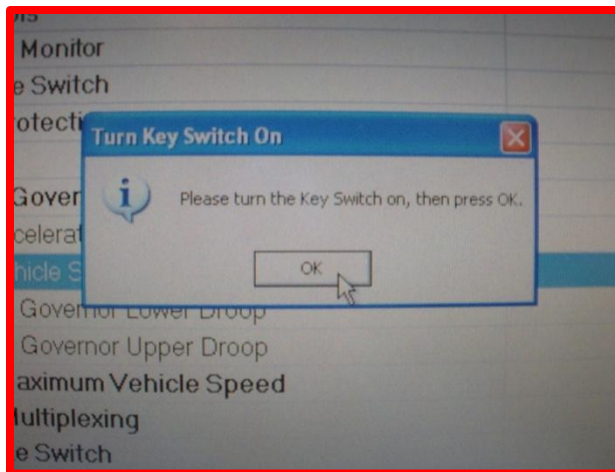
Step 10: On tool bar at top of screen, click on the small computer icon to send info to engine's ECM.



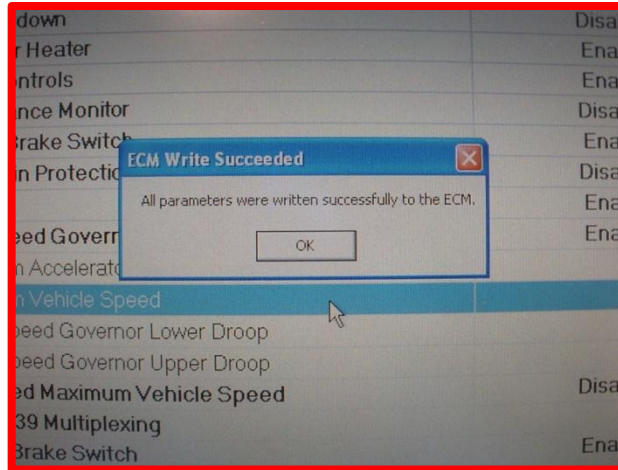
Step 11: Pop up window will indicate you are to turn ignition key off for 30 seconds. Do this and then click OK.



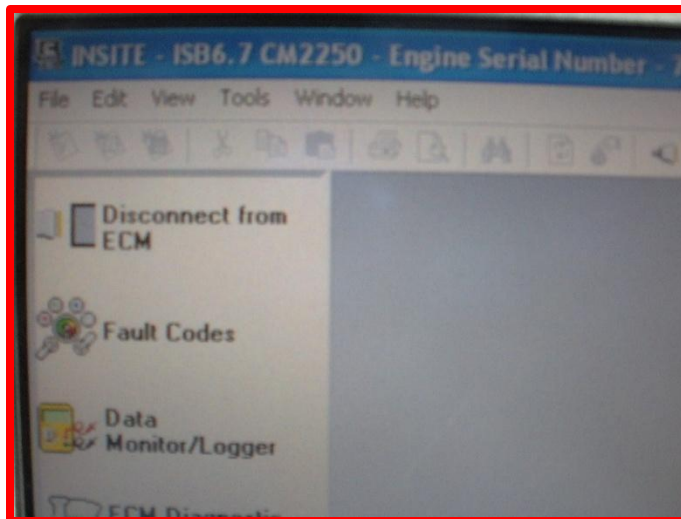
Step 12: NEW pop up window will tell you when to turn ignition key back on. When instructed, turn key on and click OK.



Step 13: Pop up window will indicate when all parameters were successfully written. Click OK.



Step 14: Click Icon on left to disconnect from ECM. When this is complete it is safe to remove laptop connections with bus.





You have access to a lot of technical information right at your fingertips. Our hope is that we can get everyone up to speed and using the information stored inside the Saf-T-Liner C2.

In our next communication we are going to show you how to get fuel information out of the bus and use it to save money. Stay tuned!!!

